

EASI-WALL System reduces cost and keeps your project on schedule

No need to have the forming crew be on site until it's time to erect the forms. A small crew stands the EASI-WALL up for the project and the Electricians and Plumbers come in and place their items directly to the EASI-WALL. The forming crew then arrives to set the forms.

The mechanically attached steel reinforcement grid provides absolute location of the reinforcement and the foam per the design criteria.

With the fast attachment of the electrical items directly to the EASI-WALL using the outlet clip, the system continues to reduce cost and keep the project on a fast pace schedule. The outlet clip holds the outlet firmly to the form face providing for reduced chance of filling with concrete during the pour.



EASI-WALL

*Extremely
Accurate
Sandwich
Insert*



PRECISE FORMS INC.
1-800-537-0706 816-690-3400
www.preciseforms.com



EASI-WALL offers several exciting attributes not seen on any other sandwich wall insert.

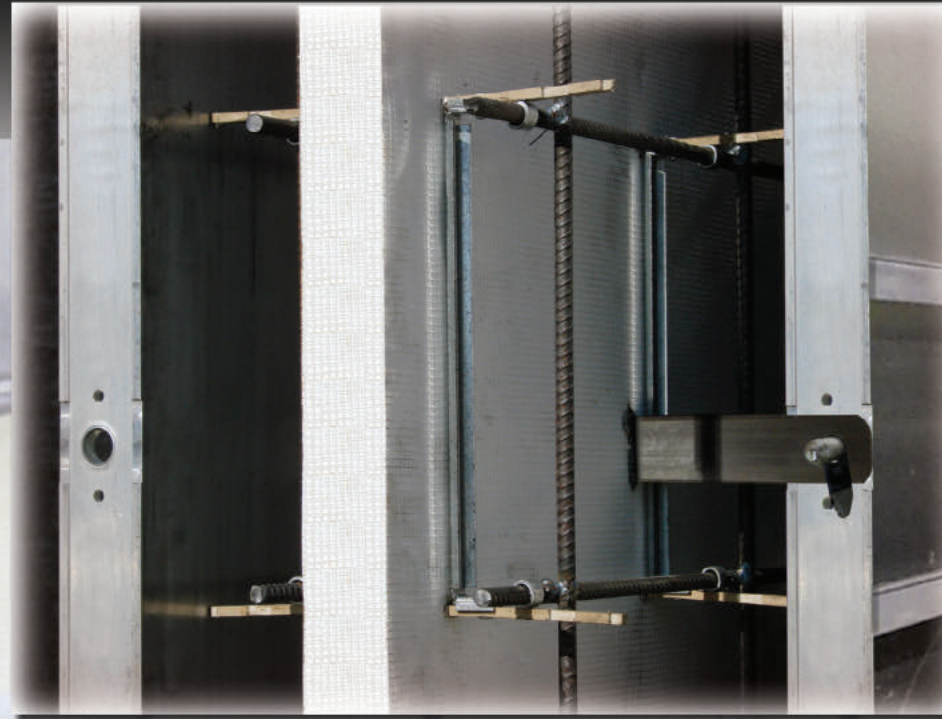
Ultimate support system!

Test pours with as much as 8 feet of offset concrete with little foam movement.

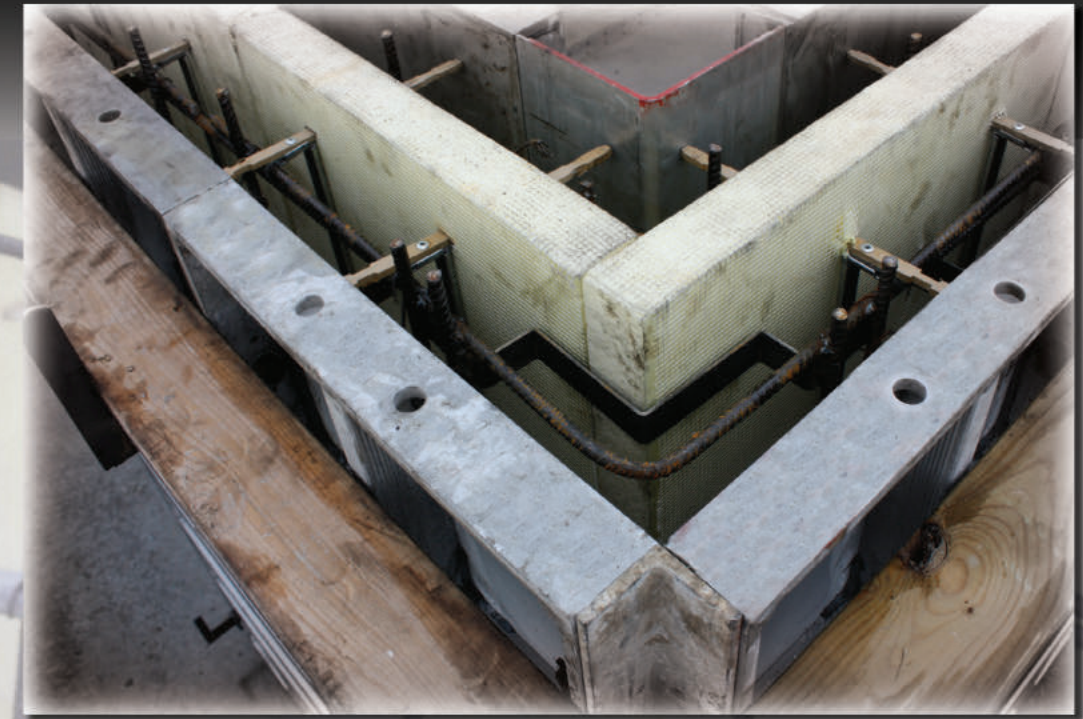
No Heat or Cold Transfer

The GFRP spacer provides multiple benefits as the EASI-WALL does not require spacer wheels or stand offs to be installed. This reduces the cost versus typical sandwich wall inserts.

EASI-WALL is preassembled and the GFRP spacer holds the foam in the proper location during the pour providing a clean and effective insulated sandwich wall. Ideal for areas with extreme climate shifts since it will not allow for heat or cold transfer.



Unique foam wrap adds increased stability and structural integrity to the foam allowing for the reduction of foam distortion due to the hydrostatic pressure exerted by the concrete placement.



EASI-WALL comes with corner sections that insure absolute location of the steel grid and the foam location at each intersection.



Greatly reduced labor cost

The Precise Forms EASI-WALL unit comes complete with the welded reinforcement grid and spacers. You receive a major reduction in labor cost since very little additional reinforcement and no spacer wheels are required. This unit is preassembled and ready for fast and easy installation. A 10" on center vertically and horizontally welded steel grid of #3 rebar on both sides provide for reduced labor cost as limited steel tying is required.

Window openings are created using the specifically designed split window buck in a fast and efficient manner. The design also allows for the thermal break to extend to the window frame itself. Therefore no concern of a thermal breach at your window openings.

